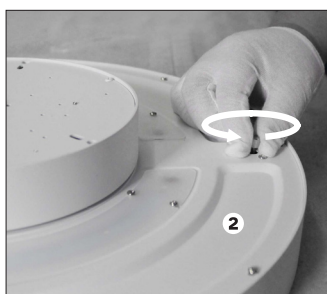
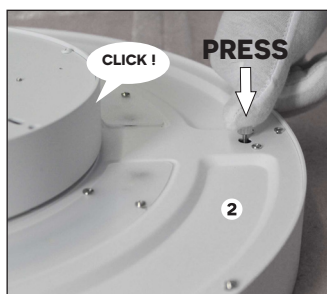


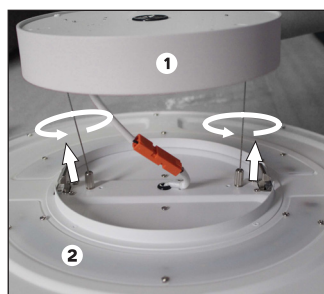
- ❶ = Boîtier de raccordement
- ❷ = Corps du luminaire
- ❸ = Accessoires de montage



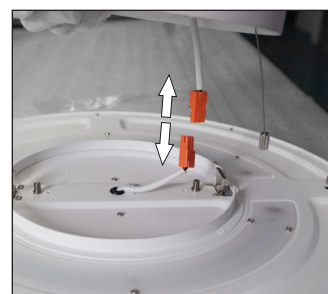
**A.** Dévisser les boutons



**B.** Presser les boutons



**C.** Dévisser les filins de sécurité



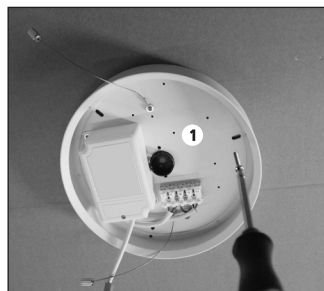
**D.** Débrancher le connecteur



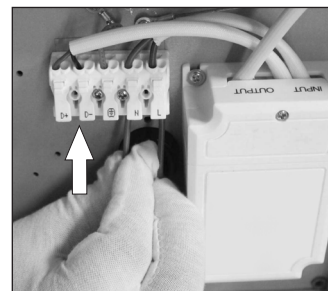
**E.** Amorcer les fixations



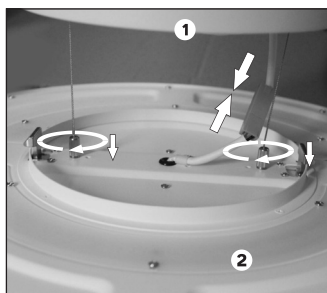
**F.** Visser les boutons



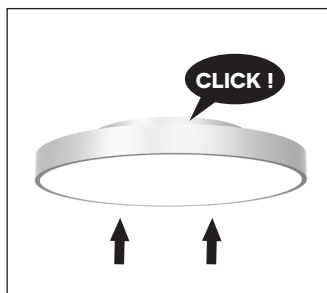
**G.** Fixer le boîtier de raccordement



**H.** Raccorder le câble d'installation



**N.** Visser les filins de sécurité  
Brancher le connecteur



**L.** Cliquer le luminaire au boîtier

