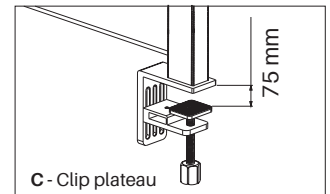
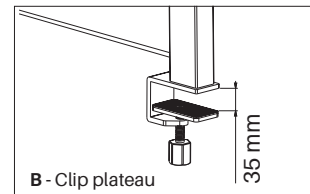
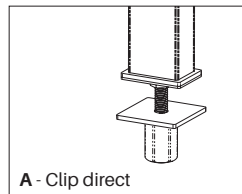


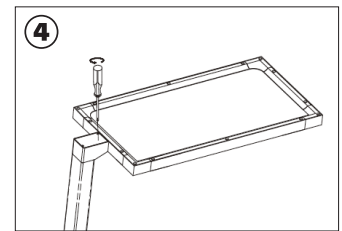
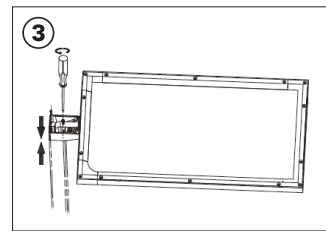
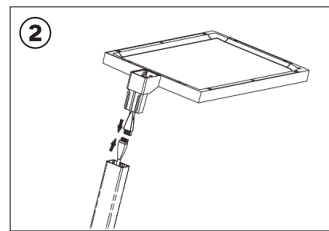
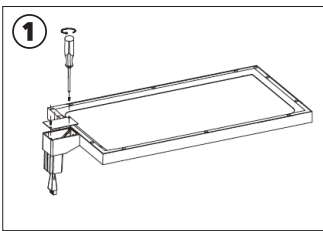


Liste des vis

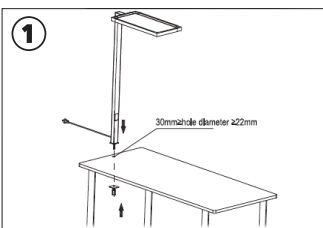
2X		
1X		
	1X	1X



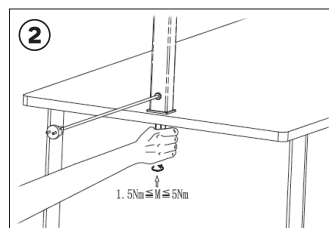
Montage de la tête



Montage clip direct (A)

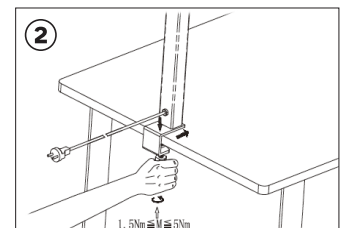
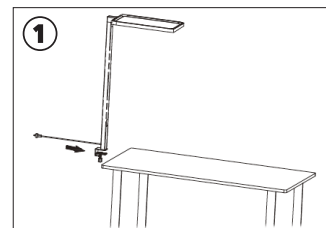


30 mm > trou \varnothing > 22 mm

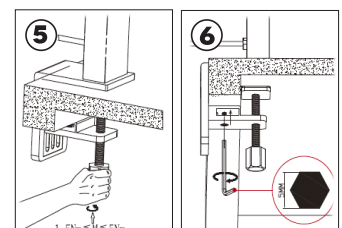
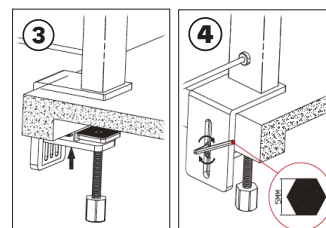
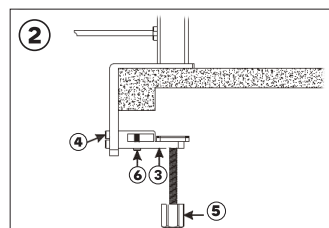
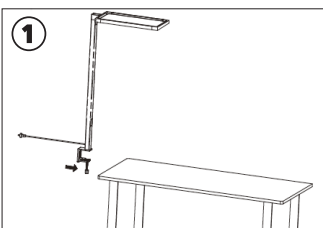


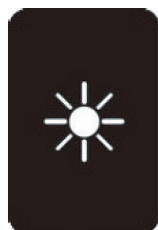
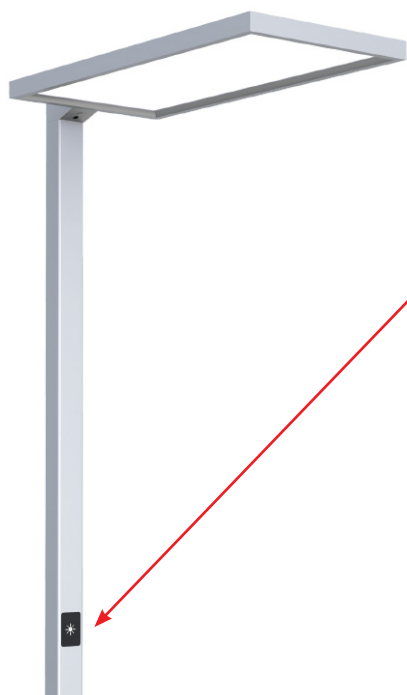
1.5Nm \leq M \leq 5Nm

Montage clip plateau h = 35 mm (B)



Montage clip plateau haut = 75 mm (C)

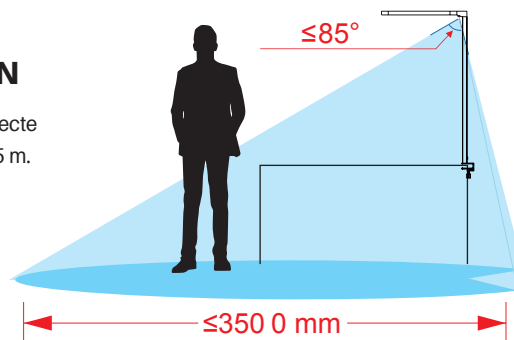




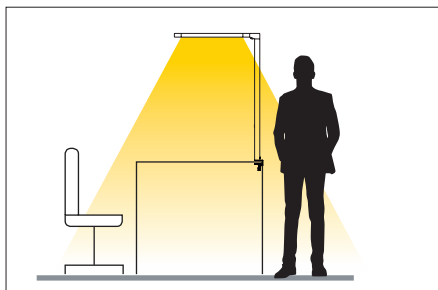
1. Appuyez rapidement pour allumer/éteindre (on/off)
2. Appuyez longtemps pour réduire l'intensité de la lumière

ZONE DE DÉTECTION

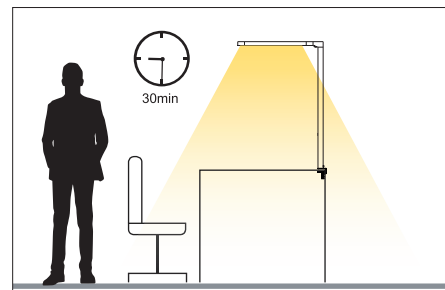
La lampe s'allume si le capteur détecte une présence dans un rayon de 3,5 m.



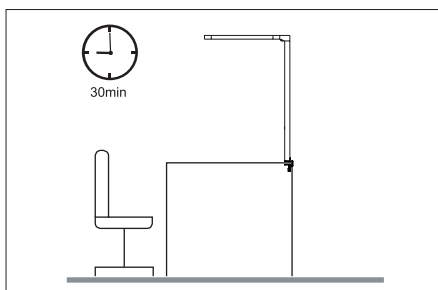
CAPTEUR DE MOUVEMENTS



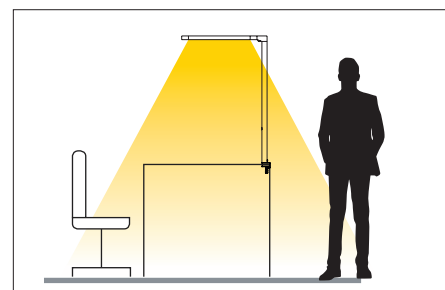
1. Allumez la lampe.



2. Le flux lumineux est réduit à 30% si aucune présence n'est détectée après 30 minutes.



3. Si aucune présence n'est détectée après 30 minutes supplémentaire, la lampe s'éteint.



4. La lampe s'allume automatiquement lorsqu'elle détecte une présence.

